

Since 1967...



PRODUCT OVERVIEW



Precision Mass Products Pvt. Ltd.

About us



Founded in 1967, Precision Industries (now Precision Mass Products Pvt. Ltd.) is one of the most recognized manufacturer of wide range of Pressure & Temperature measurement instruments in India, more renownedly known by its brand “MASS”. Mass has established this reputed brand image by offering highly durable, robust and proven products to premium customers in various industrial sectors.

In 1996, we became the distributor for Ashcroft products in India. Year 2008 saw a leap forward in this relation when Precision Mass entered into a joint venture with Ashcroft and established Ashcroft India Pvt. Ltd. In September 2015 this venture happily parted ways and

Precision Mass took over the Ashcroft India operations to continue independently.

Our Sales Headquarters and Production plant located at Chhatral (Gujarat) occupies 120,000 square feet, this ISO 9001-2008 certified facility is a self-contained, vertically integrated operation complete with production, projects, design & development, customer service, sales & marketing resource management.

Our commitment towards customer satisfaction has encouraged us to implement best manufacturing practices like “Lean Six Sigma” which enables us to reduce the Lead time, optimize resources utilization to reduce operational cost and continually improving our Process and Product Quality.

With in-depth expertise earned over the years and well equipped production facility, we manufacture Pressure measuring instruments ranging from as low as 10” H₂O up till 4000 bar and temperature instruments from -200°C up to 1200°C.

Our team consists of technical and service experts equipped to resolve even the most difficult application and technical issues. We are proficient in providing you with customized solutions for pressure and temperature measurement.

Testing Facilities:

Our in-house testing facility enables us to keep our quality standards at par with international standards. All new products undergo rigorous type testing before they are introduced into the markets.

Some of the product test performed at our plant includes

- Accuracy, Repeatability & Hysteresis
- Pressure Leak testing
- Over Range protection & Overload
- Burst pressure testing
- Cyclic Test & Vibration Test
- Humidity & Thermal Stability
- High Voltage & Insulation Resistance test
- NDT & Hydro test



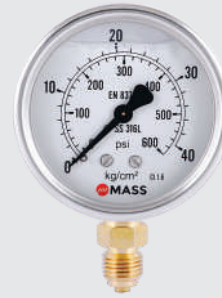
Quality Systems:

- ISO 9001-2008 certified by TUV NORD Germany.
- Primary measurement lab.
- Lean Manufacturing.
- CE, IBR, ATEX approved products.



Utility Gauges

- Rugged Construction
- Overload Pressure 130%
- Size : 40, 50, 63, 100, 150mm
- Wetted Parts : Brass, SS304, SS316
- Accuracy : 2.0%, 1.6%
- Range : Vacuum to 700 kg/cm²



Liquid Filled Gauges

- Hermetically sealed crimp type case
- Ingress Protection: IP68
- Size : 63mm, 100mm
- Wetted Parts : Brass, SS304, SS316
- Accuracy : 1.6%, 1.0%
- Range : Vacuum to 2800 kg/cm²



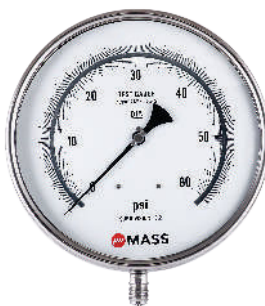
Weather Proof Gauges

- Robust all welded construction
- Overload Protection 150%
- Size : 63, 100, 115, 150, 250mm
- Wetted Parts : SS316, SS316L, Monel
- Accuracy : 1.6%, 1.0%, 0.5%
- Range : Vacuum to 2800 kg/cm²



Solid Front Gauges

- Solid front baffle wall construction
- High burst pressure bourdon tubes
- Size : 100, 115, 150mm
- Wetted Parts : SS316, SS316L, Monel
- Accuracy : 1.0%, 0.5%
- Range : Vacuum to 2800 kg/cm²



Test Gauges

- High precision Jewel Bearing Movement
- All German measuring system
- Bourdon tube : Beryllium Copper, SS, Monel
- Size : 150mm, 250mm
- Accuracy : 0.25%
- Range : Vacuum to 1000 kg/cm²



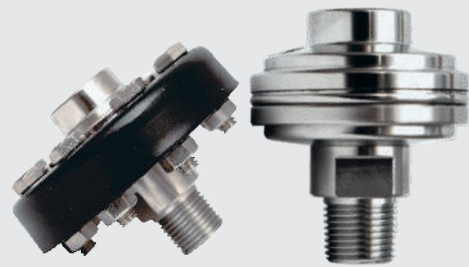
Diaphragm Type Gauges

- High stability diaphragms
- Usable to full scale
- Size : 100, 150mm
- Wetted Parts : SS316, SS316L, PTFE
- Accuracy : 1.6%
- Range : -250mmWC to 10kg/cm²



Differential Pressure Gauges

- Measuring principal : Diaphragm or Bellows
- Size : 100, 150mm
- Wetted Parts : SS316L
- Accuracy : 1.6%, 1.0%
- Pressure Range : 250mmWC to 10kg/cm²
- Static Pressure : upto 400 bar



Screw Type Diaphragm Seals

- Stress released long life diaphragm
- Process Connection : 1/4" To 1.5"
- Thread type : NPT, BSP, Metric, JIS
- Remote Capillary : upto 30meter
- Wetted Parts : 316L, Monel, 304L, Hastelloy-C, Tantalum, Gold Plated, Teflon, Nickel, etc.



Flange Type Diaphragm Seals

- Stress released long life diaphragm
- Process flange : 1/2" To 3", DN15 to DN80
- Flange Rating : upto 2500#, PN160
- Flange type : ANSI, DIN, BS
- Remote Capillary : upto 30meter
- Wetted Parts : 316L, Monel, 304L, Hastelloy-C, Tantalum, Gold Plated, Teflon, Nickel, etc.



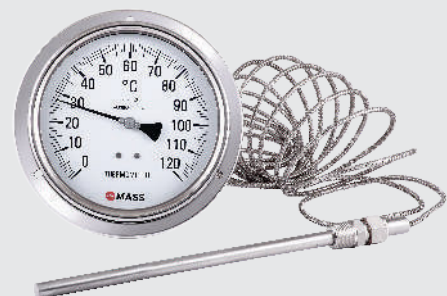
Sanitary Diaphragm Seals

- High purity SS316L diaphragm
- Ultra Cleaned and polished weld
- Connection Type : Tri-clamp, SMS
- Variety of food grade filling oils
- Low temperature effect



Bimetal Temperature Gauges

- Fast response
- Silicon damped coil
- External zero adjustment
- Size : 63, 100, 115, 150mm
- Accuracy : Class 1
- Range : -50 to 400 °C



Gas Filled Temperature Gauges

- Fast response, high repeatability
- Ambient temperature compensated
- Size : 100, 115, 150mm
- Accuracy : Class 1
- Range : -50 to 600 °C
- Remote mount capillary upto 30 meter



RTD's & Thermocouples

- High stability, vibration resistant
- Ex proof : ATEX, CMRI, INMETRO
- RTD range : -200 to 600 °C
- Accuracy : Class B, A, 1/3rd, 1/10th
- Thermocouple range : -200 to 1200 °C
- Thermocouple Type : J, K, T, E, N, S, R



Accessories for Gauges

- Snubbers, Gauge Saver, Gauge Cock, Syphon, Needle Valves, Block & Bleed valves
- Various materials,
- High pressure – temperature ratings



Flanged & Vanstone Thermowells

- Solid bore, build up or fabricated type
- Process flange : 1/2" To 3", DN15 to DN80
- Flange Rating : upto 2500#, PN160
- Flange type : ANSI, DIN, BS
- WFC PTC 19.3 2010
- MOC: CS, 304, 316, 316L, Monel, Hast-C, Inconel, Nickel, Tungsten Carbide, Duplex, Etc.



Screwed & Weld-in Thermowells

- Solid bore, build up or fabricated type
- Process Thread : 1/4" to 3"
- Thread type : NPT, BSP, Metric, JIS
- Weld type as per custom design
- WFC PTC 19.3 2010
- MOC: CS, 304, 316, 316L, Monel, Hast-C, Inconel, Nickel, Tungsten Carbide, Duplex, Etc.



Manifolds

- 2 Way, 3 Way, 5Way
- Pipe to Pipe, Pipe to Flange & Flange to Flange type
- MOC: 316, 316L, Monel, Hastelloy-C
- Pressure rating upto 10,000 psi



Instrument Tube Fittings

- Double ferrule compression fittings
- Straight, Elbow, Tee, Cross, Plugs, Adaptors etc.
- Thread to thread, thread to tube and tube to tube
- Size 1/16" to 1" Imperial, 2mm to 25mm Metric
- Threads : NPT, BSP, Metric, JIS
- MOC : 316, 316L, Monel, Hastelloy-C

Since 1967...



Simply Reliable...



INDIA

Precision Mass Products Pvt. Ltd.
Plot No. 2306, G.I.D.C. Chhatral, Ta. Kalol,
Dist. Gandhinagar, Chhatral-382729, India.
sales.india@precisionmass.com

AUSTRALIA

Precision Mass Pty Ltd.
5 Jacana Crescent, Williams Landing,
Victoria 3027, Australia
sales@precisionmass.au

USA

Precision Mass Inc.
STE 16, 730 Middle Tennessee Blvd,
Murfreesboro, TN 37129-5613, USA.
sales.usa@precisionmass.com

www.precisionmass.com

